

# Signet 3719 pH/ORP Wet-Tap Assembly



## Features

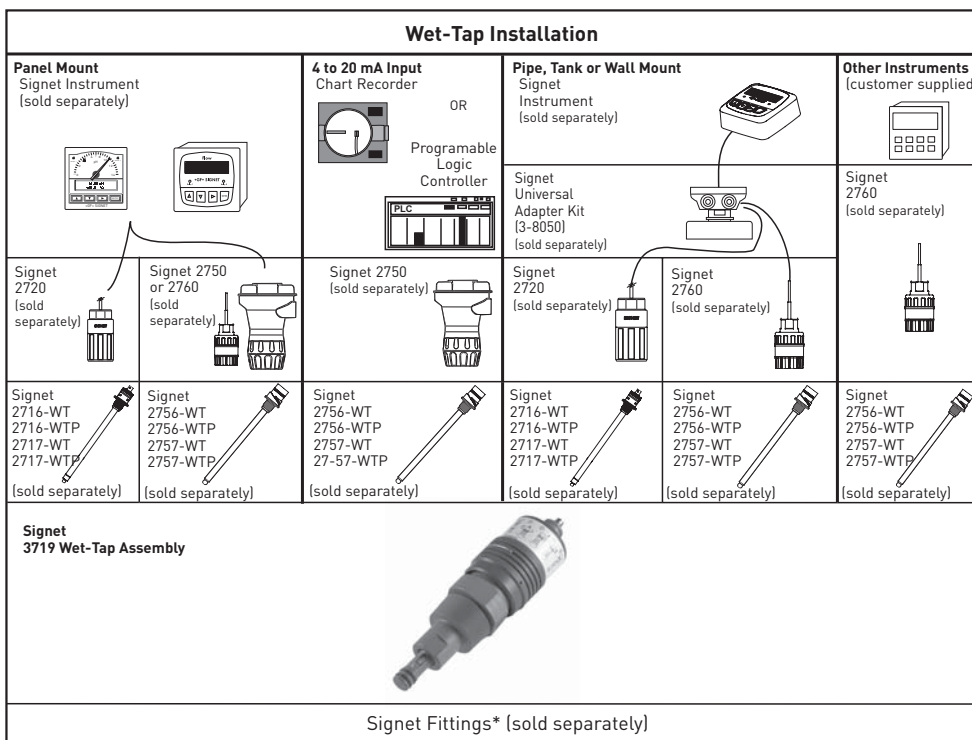
- Electrode removal without process shutdown
- Space saving 45mm (1.75 in.) short-stroke design
- Sealed pneumatic dampening for smooth and safe operation
- SafeLoc™: Cam-activated automatic locking mechanism
- Protects electrode sensing surface from breakage
- Suitable for mounting in any orientation
- Process threaded connection NPT or ISO
- Low profile clamp-on saddle fittings for convenient installation in ASTM pipe sizes 2.5 to 12 in.

## Description

The Signet 3719 pH/ORP Wet-Tap allows installation and removal of pH or ORP electrodes, even under process pressure, without the need for process shutdown during routine electrode maintenance and calibration. Automatic process isolation is achieved during electrode retraction with a double O-ring seal on a

unique and compact retraction assembly; no separate valve is required. A patented cam-activated automatic locking mechanism, SafeLoc™, and the short stroke design help to assure operator safety. The wet-tap unit can be mounted at any angle and can be used with the Signet DryLoc® and Twist-Lock Wet-Tap electrodes.

## System Overview



## Applications

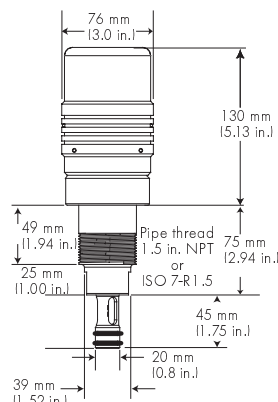
- Aquatic Animal Life Support Systems
- Recreational Water Monitoring
- Water & Wastewater Treatment
- Effluent Monitoring
- Neutralization Systems
- Sanitization Systems



## Dimensions

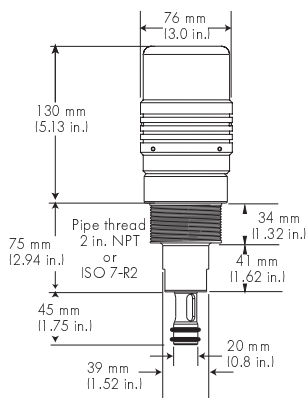
### 3719-1X

For pipe sizes up to 4 in.



### 3719-2X

For pipe sizes 6 to 12 in.



### Model 3719

#### Ordering Information:

- 1) Use a mounting saddle or a standard threaded part to mount Wet-Tap assembly.
- 2) ASTM fittings are available to order; metric fittings are customer supplied.
- 3) Use -11 or -12 versions for pipe sizes up to 4 in.
- 4) Use -21 or -22 versions for pipe sizes 6 to 12 inches.

Please refer to **Installation, Accessories and Fittings** sections for more information.

## Specifications

### 3719 Wet-Tap

#### General

Compatible Electrodes:

- Twist-Lock: 2716-WT, 2717-WT
- DryLoc®:
  - 2756-WT, 2756-WT-1 (glass)
  - 2756-WTP, 2756-WTP-1 (plastic)
  - 2757-WT (glass)
  - 2757-WTP (plastic)

Process Connection:

- 3719-11: NPT 1.5 in.
- 3719-21: NPT 2 in.
- 3719-12: ISO 7/1 - R1.5
- 3719-22: ISO 7/1 - R2

Maximum Flow Velocity: 3m/s (10 ft/s)

#### Materials:

- Retraction Housing (Wetted): CPVC
- O-rings (Wetted): FPM
- Locking Shroud: PVC
- Hardware: 316 stainless steel

#### Maximum Temperature/Pressure Rating

Operating Pressure:

100 psi (6.9 bar) maximum

**Shipping Weight:** 1.2 kg (2.7 lbs.)

#### Standards/Approvals

- Manufactured under ISO 9001:2000 for Quality and ISO 14001:2004 for Environmental Management

#### Low Profile Clamp-on Saddle Fittings

##### Materials:

- Saddle body (wetted):
  - Polypropylene (Grade 8, ASTM D2565, 1-8, UV stabilized)
- Gasket (wetted): FPM
- Saddle Hardware: 316 stainless steel
- Reinforcement Ring: 430 stainless steel

Size Range: 2.5 to 12 in. (ASTM)

## Ordering Information

Wet-Tap Part Number	
<b>3-3719</b>	Wet-Tap Assembly
	Mounting Options - Choose one
	-11 1.5 inch NPT process threads
	-12 ISO 7/1-R 1.5 process threads
	-21 2 inch NPT process threads
	-22 ISO 7/1-R 2 process threads
<b>3-3719</b>	<b>-11 Example Part Number</b>

Wet-Tap Assembly Compatible Electrodes - See individual product pages for more information.	
<b>3-2716-WT</b>	Twist-Lock pH Electrode (Used with 2720 preamplifier)
<b>3-2717-WT</b>	Twist-Lock ORP Electrode (Used with 2720 preamplifier)
<b>3-2756-WT</b>	DryLoc® pH (glass) Electrode (Used with 2750 sensor electronics)
<b>3-2756-WT-1</b>	DryLoc® pH (glass) Electrode (Used with 2760 Preamplifier)
<b>3-2757-WT</b>	DryLoc® ORP (glass) Electrode (Used with 2750 sensor electronics or 2760 preamplifier)
<b>3-2756-WTP</b>	DryLoc® pH (plastic) Electrode (Used with 2750 sensor electronics)
<b>3-2756-WTP-1</b>	DryLoc® pH (plastic) Electrode (Used with 2760 Preamplifier)
<b>3-2757-WTP</b>	DryLoc® ORP (plastic) Electrode (Used with the 3719 Wet-Tap Assembly only)

Mfr. Part No.	Code	Mfr. Part No.	Code
3-3719-11	<b>159 000 804</b>	3-2756-WT	<b>159 000 834</b>
3-3719-12	<b>159 000 806</b>	3-2756-WT-1	<b>159 001 383</b>
3-3719-21	<b>159 000 805</b>	3-2756-WTP	<b>159 001 390</b>
3-3719-22	<b>159 000 807</b>	3-2756-WTP-1	<b>159 001 384</b>
3-2716-WT	<b>159 000 809</b>	3-2757-WT	<b>159 000 835</b>
3-2717-WT	<b>159 000 811</b>	3-2757-WTP	<b>159 001 391</b>

## Accessories and Replacement Parts

Mfr. Part No.	Code	Description
<b>Mounting Saddles</b>		
2007-0225	<b>159 000 812</b>	PP Clamp-on Saddle, 2.5 x 1.5 in. (ASTM, NPT)
2007-0230	<b>159 000 813</b>	PP Clamp-on Saddle, 3 x 1.5 in. (ASTM, NPT)
2007-0240	<b>159 000 814</b>	PP Clamp-on Saddle, 4 x 1.5 in. (ASTM, NPT)
2007-0260	<b>159 000 815</b>	PP Clamp-on Saddle, 6 x 2 in. (ASTM, NPT)
2007-0280	<b>159 000 816</b>	PP Clamp-on Saddle, 8 x 2 in. (ASTM, NPT)
2007-0210	<b>159 000 817</b>	PP Clamp-on Saddle, 10 x 2 in. (ASTM, NPT)
2007-0212	<b>159 000 818</b>	PP Clamp-on Saddle, 12 x 2 in. (ASTM, NPT)
<b>Other</b>		
1220-0114	<b>159 000 854</b>	3719 O-ring, FPM (spare part)
3-3719.390	<b>159 000 855</b>	3719 Locking Shroud (spare part)