



**Griffco Valve Inc.**  
 6010 N. Bailey Ave., Ste 1B  
 Amherst, NY 14226  
 Phone: 1 716 835-0891  
 Fax: 1 716 835-0893

# G - SERIES PRESSURE RELIEF VALVE



**Griffco G-Series** diaphragm pressure relief valves are designed to protect chemical feed systems from over pressure damage caused by defective equipment or a blockage in the chemical feed line. Robust construction ensures reliability in the rigorous service of municipal and industrial applications. Wetted materials include: **PVC, CPVC, PP, PVDF, PTFE, 316 SS, A20 and Hastalloy C.** Available sizes: 1/2+ - 4+

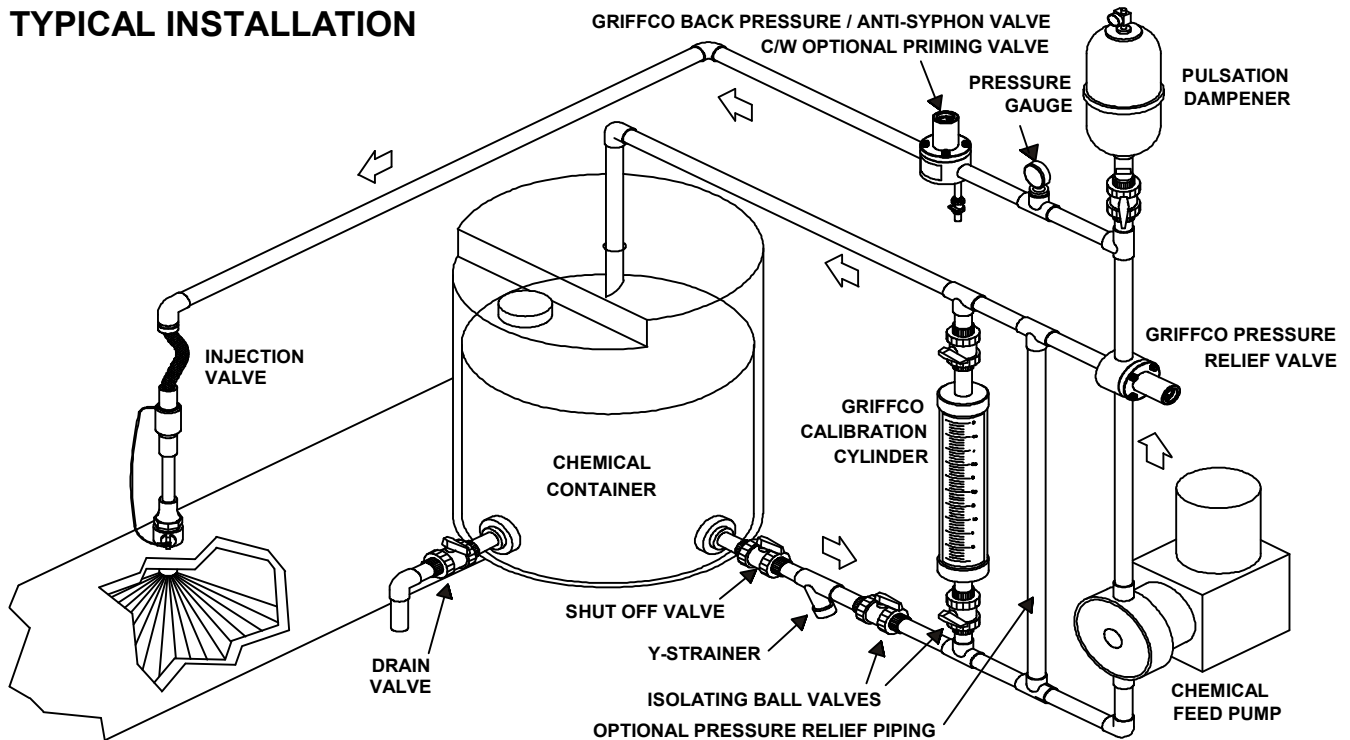
## Features:

- High Reliability / Low Cost
- Vulcanised PTFE/EPDM Diaphragm
- Adjustable 0 - 250 PSI
- Optional 350 PSI Rated Valve
- 2 & 3 Port Configurations
- Ventable to Suction Line
- Robust, Machined Construction
- Wide Range of Materials

## Operation:

**Griffco** diaphragm pressure relief valves operate when the pressure in the chemical system exceeds the preset pressure of the valve. The diaphragm is held against the valve seat by an internal spring. When the preset pressure is exceeded the diaphragm is forced up and the chemical flows out the relief port, back to the chemical tank or to the suction side of the pump. The valves are pre-set at 50 psi, however they are field adjustable from 0 - 250 psi, (optional 350 psi) via the adjustment screw. The relief valve should be set approximately 15 psi higher than the system pressure. Installation should be made as close to the pump as possible, without any valves or accessories between the relief valve and the pump. Consult your pump manufacturer for his recommendations.

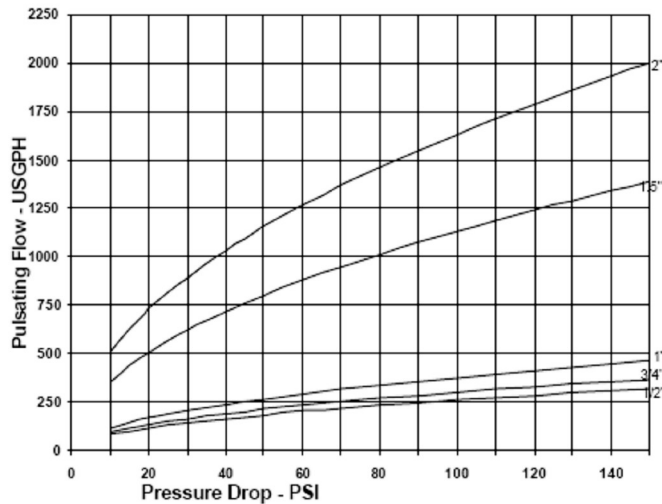
## TYPICAL INSTALLATION



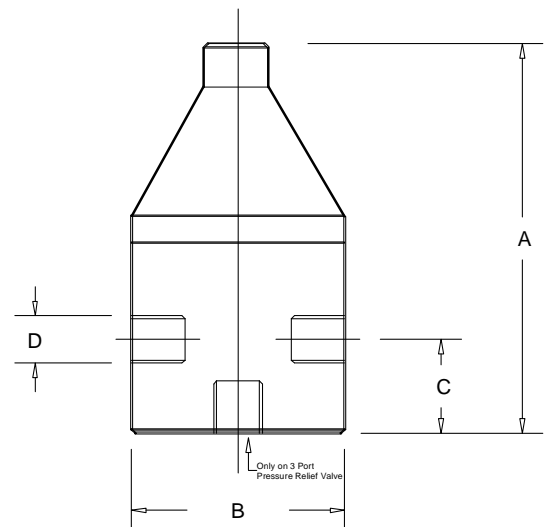
## Technical Data:

<b>Model PRG Sizes:</b>		1/2", 3/4", 1", 1 1/2", 2", 3", 4"			
<b>Connections:</b>		NPT, Socket, Flange			
<b>Pressure Adjustment</b>		0 - 50 psi, 0 - 150 psi, 0 - 250 psi, 50 - 350 psi			
<b>Flow Rates @ 150 psi</b>		<b>Shipping Weight: lbs</b>			
<b>Size</b>	<b>Pulsating</b>	<b>Continuous</b>	<b>Plastic</b>	<b>Metal / Plastic Top</b>	<b>Metal / Metal Top</b>
1/2"	300 USgph	21 USgpm	3.0	5.5	6.5
3/4"	300 USgph	21 USgpm	3.0	5.5	7.0
1"	500 USgph	26 USgpm	3.5	6.0	7.0
1 1/2"	1200 USgph	63 USgpm	7.0	14.0	23.0
2"	2350 USgph	120 USgpm	9.0	20.0	30.0
3"	5200 USgph	270 USgpm	28.0		
4"	5200 USgph	270 USgpm	30.0		
<b>Max Temperature: (°F)</b>		Plastic: 140° ; Metal: 300°, (Peak Short Term 390°)			
<b>Materials of Construction:</b>					
<b>Diaphragm</b>		PTFE / EPDM, Optional: Viton & PTFE / Viton			
<b>Valve Top</b>		Standard: PVC Optional: CPVC, 316 SS, Others on Request			
<b>Valve Body</b>		PVC, CPVC, PP, PTFE, PVDF, 316 SS, A 20, Hast. C, Others on Request			

## Performance Curves: (3" & 4" curves on request)



## Dimensions: (inches)



## Product Codes For Ordering Pressure Relief Valves:

PRG    □   □   □   □   □  
           1    2    3

### 1 = Size

050 - 1/2+  
 075 - 3/4+  
 100 - 1+  
 150 - 1 1/2+  
 200 - 2+  
 300 - 3+  
 400 - 4+

### 2 = Material

P - PVC  
 CP - CPVC  
 PP - Polypro  
 T - PTFE  
 K - PVDF  
 S - 316 SS  
 A - Alloy 20  
 C - Hastalloy C

### 3 = Options

V - Viton Diaphragm  
 S - Socket Connections  
 F - Flanged Connections  
 OSS - Optional 316 SS Top  
 MSS - 50 - 350 psi; 316 SS Top  
 AR - Optional Air Release Port

D	A	B	C
1/2+	5.60	3.50	1.10
3/4+	5.60	3.50	1.10
1+	5.90	3.50	1.25
1 1/2+	8.95	4.50	2.10
2+	8.95	5.00	2.10
3+	12.0	15.0	3
4+	12.0	15.0	3