



CHEM-TECH

PULSAFEEDER



XPV SERIES

The Chem-Tech XPV Series pump combines the best in variable speed peristaltic pump technology with state of the art control electronics, providing unparalleled performance, control and value. The XPV represents the leading edge of microprocessor performance management, that allows a variety of choices of input signal types, and onboard timer programs to customize this pump to any application. Of course, this pump is as rugged and reliable as it's fixed speed siblings, the XPF and the XPA.

The electronic management system matches the **Variable Speed** motor to the real-time dosing requirements as directed by either a **4-20mA** signal, **Hall Effect** or **Dry Contact** pulse input, **External Stop** or manual operation in **Fixed Speed** mode. The pump can even be programmed with a **Cycle Timer** to run automatically at set intervals, or with a **Daily Timer** to add chemical based on days of the week.



Variable Speed

Fully Scalable 4-20mA Input

Hall Effect Input

Flow Totalization

Flow Verification

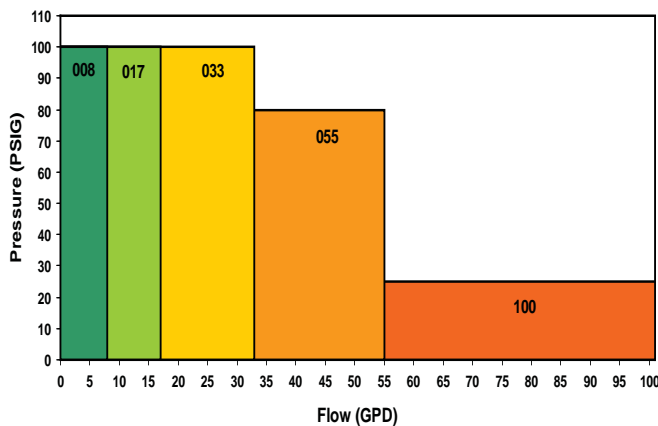
Cycle Timer

Daily Timer

LCD Display

Contacting Head Water Meter Input

Chem-Tech XPV Performance



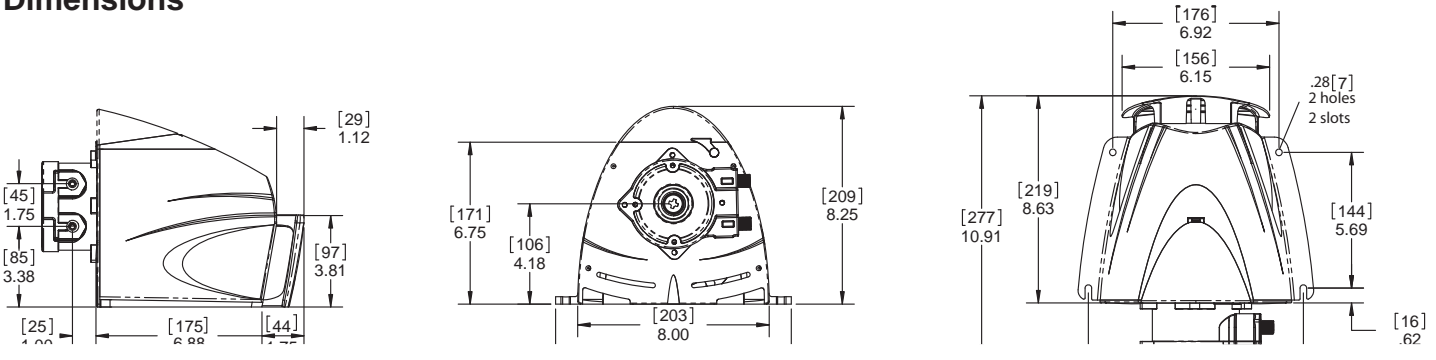
The large **LCD Display** allows for simple, intuitive program selections, and clearly displays operating parameters. The **Flow Totalization** menu accurately reports the volume of chemical pumped at the touch of a button. The optional **Flow Verification** feature can disable the pump and activate an alarm if flow is interrupted for any reason.

Chem-Tech XPV Series Selection Guide		XP	---	---	V	N	---
MODELS:	Series XP - 100 PSI maximum pressure (6.8 BAR) XP008 = 8 GPD (1.3 LPH) XP017 = 17 GPD (2.7 LPH) XP033 = 33 GPD (5.2 LPH) Series XP - 80 PSI maximum pressure (5.5 BAR) XP055 = 55 GPD (8.7 LPH) Series XP - 25 PSI maximum pressure (1.7 BAR) XP100 = 100 GPD (15.8 LPH)						
ELECTRICAL:	L = 115V, 60Hz 1.8A H = 230V, 50/60Hz .9A						
DRIVE:	V = Variable Input Control w/ I/O Cable						
TUBING:	N = Standard Norprene with 1/4" NPT fittings						
SYSTEM:	X = Pump Only 1 = 15 Gallon Tank System 3 = 35 Gallon Tank System T = 15 Gallon ITS System						
A completed model should look like "XP033LVNX"							

Specifications		Optional
Max. Viscosity	300 Cps	
Enclosure	NEMA 3R / IP31 (In Horizontal Position)	
Temperature Limitations	125F / 51C max.	
Electrical Requirements	115V / 60 Hz	230V 50/60Hz
Shipping Weight	8 lbs. / 3.63kg.	

* Specifications subject to change without notice

Dimensions



An ISO Certified Company



CTI-010 K08



Standard Product Operations
 27101 Airport Road • Punta Gorda, Florida 33982
 TEL (941) 575-3800 • TEL 800-333-6677
 FAX (941) 575-4085 • FAX 800-456-4085
 spotech@idexcorp.com • www.pulsafeeder.com