

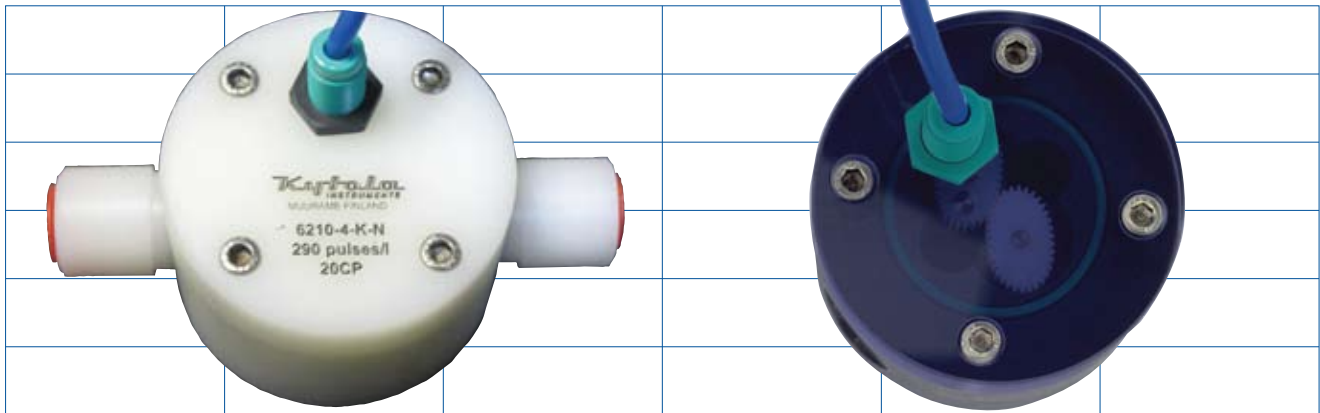


## Oval Gear Meter • Model 6210

Polymer Injection • Flocculant Flow Control • Viscous Chemical Dosage

Maximum Scale  
8 GPM (30 LPM) 64 PPM

Independent of viscosity  
and temperature changes



Model 6210-4-K-N  
PVDF body, NPT thread adapters

Model 6210-4-EF41  
PVC body, BSP threads, transparent cover

### When Reliability Counts!

Kytola Instruments is the leading manufacturer of high performance industrial flowmeters, sealing water monitors and lubrication solutions.

You can rely on us when you need accurate flow measurement, short delivery lead times, expert advice and support.

Customers choose Kytola products to reduce maintenance and costs. When reliability counts, it's Kytola.

### Model 6210

#### Superior Features

- CNC machined
- Heavy duty construction
- Easy maintenance
- Accurate measurement over large viscosity range
- Chemical resistant
- Viscosity and temperature changes do not affect measured results.

#### Flexible Options

- NPT thread adapters
- Alternative sensors
- Transparent cover
- Custom markings and logo available

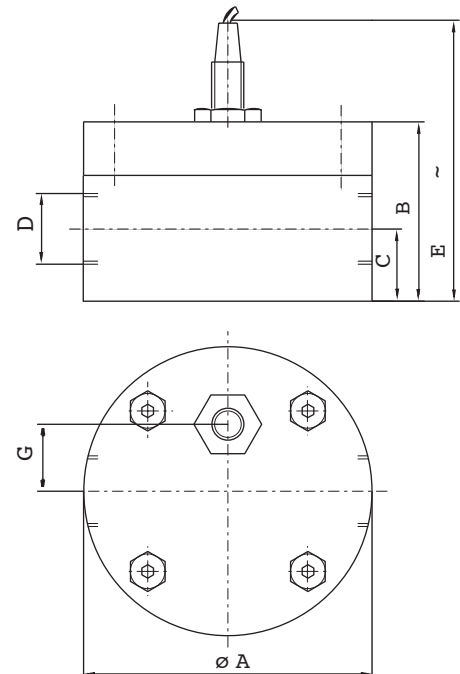
Model	6210-1	6210-2	6210-4	6210-10	6210-20	6210-30
Pulse Rate Pulses/Pint (Liter)	388 (820)	212 (450)	137.2 (290)	60 (126.8)	35.87 (75.8)	23.56 (49.8)
Pulse Rate Pulses/Gallon	3100	1700	1098	480	286.9	188.5
Connections (*BSP)	1/4"	1/4"	1/4"	3/4"	3/4"	3/4"
Gears	PVDF					
Body	PVDF/PVC					
Shafts	Hastelloy C					
Seals	Nitrile (*Viton®, EPDM)					
Sensor	Namur, DIN 19234					
Maximum Pressure	145 psi (10 bar) up to max. temp.					
Maximum Temperature	175°F (80°C) PVDF body, 104°F (40°C) PVC body					
Viscosity Range	30 - 1000 cSt					
Accuracy	± 5% of reading					
Weight	.72 lbs (*330 g)	.77 lbs (*350 g)	.79 lbs (*360 g)	2lbs(*930 g)	2.2lbs(*1 kg)	2.6 lbs(*1.2 kg)

\*Special construction available upon request. BSP thread in body. NPT thread adapters available.

6210		<b>Flow Range</b>		
		PPM	GPH/GPM	LPM
<b>1</b>		0.2 - 2	1.50-15 GPH	0.1 - 1
<b>2</b>		0.4 - 4	3.0-32 GPH	0.2 - 2
<b>4</b>		0.8 - 8	0.1-1 GPM	0.4 - 4
<b>10</b>		2.0 - 20	0.25-2.5 GPM	1.0 - 10
<b>20</b>		4.0 - 40	0.5-5 GPM	2.0 - 20
<b>30</b>		6.0 - 64	0.8-8 GPM	3.0 - 30
		<b>Body Material</b>		
<b>K</b>		PVDF - body		
<b>P</b>		PVC - body		
		<b>Connections</b>		
		BSP - threads		
<b>N</b>		NPT - thread adapters		
		<b>Accessories</b>		
		Viton® seals (standard)		
<b>Y</b>		EPDM seals		
		NAMUR - sensor (standard)		
<b>D</b>		Without sensor (M12x1 thread)		
<b>F</b>		PNP/NPN - sensor (2 wire) ILK-M12-FR		
<b>P</b>		PNP - sensor (3 wire) ILK-M12-BP		
<b>T</b>		NPN - sensor (3wire) ILK-M12-AN		

#### NPT Adapters

ZADR1/4NK - Nylon	1/4" BSP x 1/4" NPT
ZADR1/4N3/8K - Nylon	1/4" BSP x 3/8" NPT
ZADR3/4N1/2K - Nylon	3/4" BSP x 1/2" NPT
ZADR3/4NK - Nylon	3/4" BSP x 3/4" NPT
ZADR3/4N1K - Nylon	3/4" BSP x 1" NPT
ZADR3/8N1/2H - AISI316	3/8" BSP x 1/2" NPT



Model	A	B	C	D	E	G	H
6210-2	2.87" (*73)	1.77" (*45)	.59" (*15)	BSP 1/4"	3.54" (*90)	.59" (*15)	M12x1
6210-4	2.87" (*73)	1.77" (*45)	.71" (*18)	BSP 1/4"	3.54" (*90)	.59" (*15)	M12x1
6210-10	2.87" (*73)	1.93" (*49)	.87" (*22)	BSP 1/4"	3.70" (*94)	.59" (*15)	M12x1
6210-20	4.25" (*108)	2.63" (*67)	1.06" (*27)	BSP 3/4"	4.13" (*105)	.98" (*25)	M12x1
6210-30	4.25" (*108)	3.43" (*87)	1.06" (*27)	BSP 3/4"	4.92" (*125)	.98" (*25)	M12x1

\*mm

**Kytola**  
INSTRUMENTS

www.kytola.com • flow@kytola.com • USA (678) 701-FLOW  
Canada (514) 630-7887 • Technical Support (678) 701-8359  
Fax (514) 448-5151

Representative: